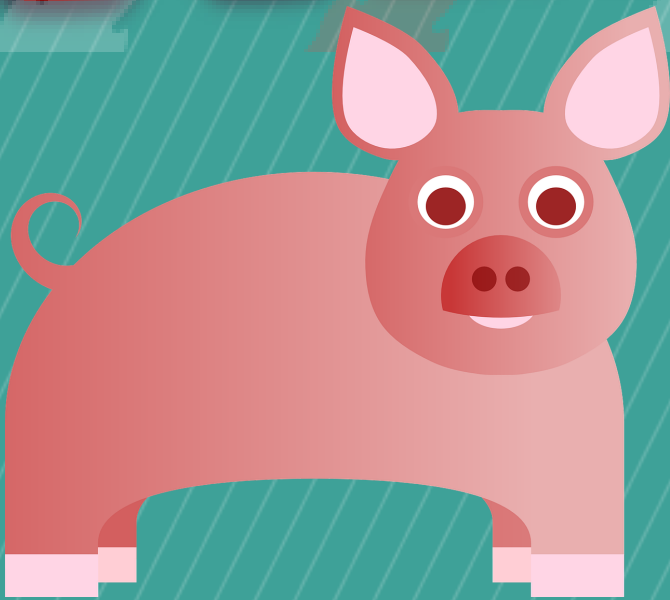
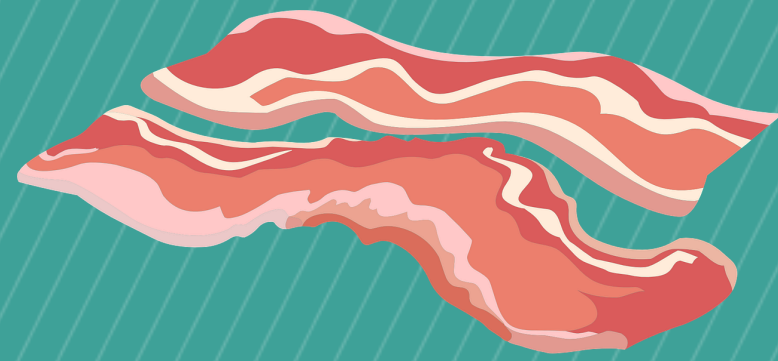


# A MEATY PARAGRAPH



A tool for writing  
body paragraphs

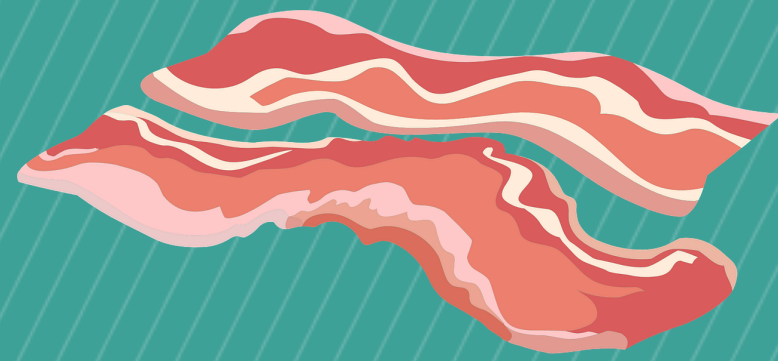
# Main Idea



The part of a topic sentence that states the main idea of the body paragraph.

Main ideas are like labels for the paragraph, are arguable, and focused on a specific point.

# Evidence

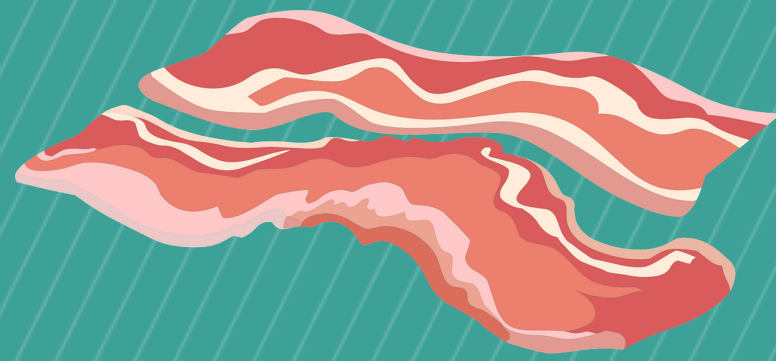


The parts of a paragraph that  
prove the main idea.

Examples of evidence include  
quotations/paraphrases from  
sources, facts,  
and narratives/descriptions of  
your own experiences



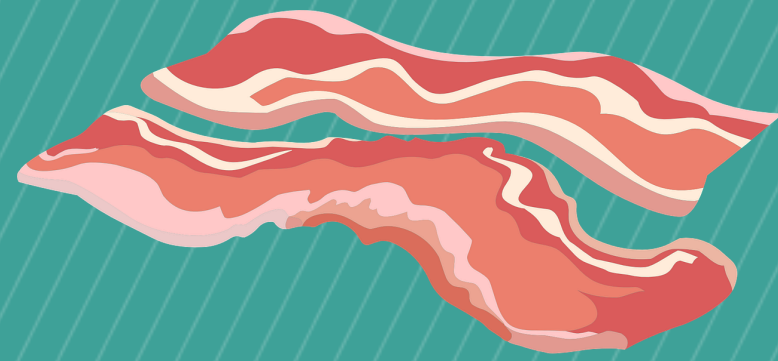
# Analysis



The parts of a paragraph that explain the evidence.

Make sure you tie the evidence you provide back to the paragraph's main idea. In other words, discuss the evidence.

# Transition



The part of a paragraph that helps you move fluidly from the last paragraph.

Look both backward and forward in order to help you connect your ideas for your reader